

# CAPACITY BUILDING PROGRAMME AGENDA 2030 AT LUND UNIVERSITY



## LAND IS LIFE

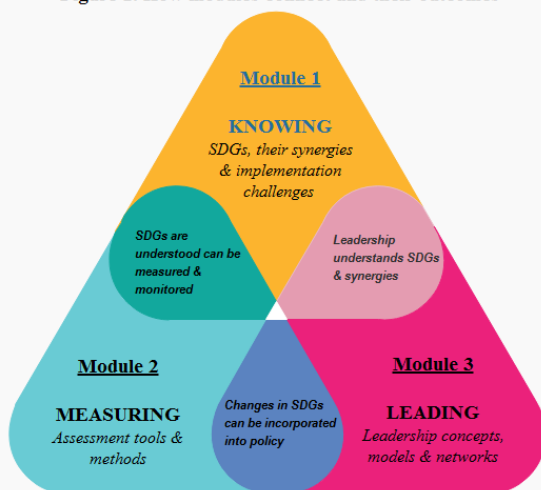
The capacity building programme 'Land is Life' aims to build capacities and skills to strengthen the operational understanding of the synergies and trade-offs associated with SDG 15 – [Life on Land](#).

Land is at the heart of what makes agriculture function in sub-Saharan Africa, and as such it is also crucial to reducing poverty. Globally, land is a critical and significant resource that is both cross-cutting and indispensable to achieving many other SDGs. Agenda 2030 contains land-related indicators under SDG 1, 2, 5, 11 and 15, each one including specific targets and indicators addressing land. The importance of land in Africa is multi-faceted and central to the achievement of sustainable development goals. In general, addressing issues of sustainable land resources access and management is at the heart of the fight against poverty, food insecurity; inequality; unemployment; environmental degradation; and the poor management of vital land resources.

The purpose of this programme is to build and strengthen capacity and skills in identifying and leveraging the synergies that sustainable land management and the governance of land resources stands to contribute to related development sectors. These synergies include the reduction of food insecurity, improvements in health and nutrition; promotion of gender equality and women's empowerment; sustainable environmental management; and enhanced adaptation to climate change.

The programme is divided into three interlinked modules, each of which will build the groundwork for comprehension of the next, in a framework that includes three key dimensions: knowing, measuring, and leading. These modules have a seamless connection with each other and contribute to the overall objective of the training programme (Figure 1). The programme will ensure that all participants are well versed in the basic knowledge of the SDGs, including their history and implementation challenges.

**Figure 1. How modules connect and their outcomes**



Land is Life is hosted by the Lund University Centre for Sustainability Studies – LUCSUS, a leading interdisciplinary research center at Lund University (<http://www.lucus.lu.se>). It runs education and research programme at different levels, including Masters and doctoral programmes on sustainability sciences. LUCSUS addresses complex sustainability issues from a critical and an integrated natural and social science perspective, and with a solutions-based approach. It has decades of experience developing and running sustainability programmes in education and research.

LUCSUS has a well-established reach in education and research in sub-Saharan Africa. One of its key research themes, Land Use, Governance, and Development has many projects being undertaken with stakeholders at all levels in the African region.



## The Land is Life programme aims to increase participants':

- Understanding in basic sustainability science, especially local and global ecosystems and the importance of biodiversity in these systems.
- Knowledge of the biological and economic productivity of land, and how this is related to economic and environmental welfare and sustainable development at different levels.
- Understanding about the diversity of threats posed to biodiversity and ecosystem productivity, including habitat loss, deforestation, fragmentation, overexploitation, and invasive species, and can relate these to conditions relevant to biodiversity in their countries.
- Knowledge to identify synergies and trade-offs between land and related SDGs, and apply such integrated knowledge to understand localized challenges and opportunities in achieving the SDGs
- Understanding the importance of assessments and monitoring for decision-making in land and land-related SDGs
- Knowledge to distinguish between the models and tools available, and methods for using these tools to assess key proxies of land health and social development.
- Understanding about the need for new forms of organizing and governing in dealing with sustainability challenges, especially when it comes to project-based organisation involving diverse stakeholders
- Understanding about the key concepts in the fields of leadership and organisation, project management, social entrepreneurship and innovation in the context of sustainability and sustainable development.
- Knowledge to identify the challenges involved in organizing and leading organisational development and project management in addressing the sustainability challenge in their individual organisational or country context.
- Knowledge to distinguish between different models and tools and their application for broad stakeholder involvement in addressing issues associated with land-based sustainable development.
- Understanding about the philosophical, methodological and ethical approaches to leadership and organisation, and can distinguish between the Swedish leadership model<sup>4</sup> and that of their home countries or regions.

## PROGRAMMEMEME SET-UP

The programme consists of different parts; a pre-course assignment with independent studies/tasks, a two-week module in Kisumu, Kenya in June, and a ten-day module in Lund, Sweden in September/October. In-between the training modules the participants will develop cases on an individual basis guided by a mentor via the web.

The module in Kenya will be held in Kisumu. Activities will include presentations of plans for areas of focus by participants, lectures by international and local faculty, group work, field work, and a local case study.

The module in Sweden will be held at Lund University in Lund Sweden. An average day has 5-7 hours of scheduled activities, with a mixture of lectures and exercises on leadership for sustainable development from Lund University. Workshops will draw on a range of Swedish policy-makers, political leaders, the private sector, and leaders of civil society. Workshops and study visits to relevant organisations and authorities will connect the theoretical parts to practice and will give the participants a chance to expand their networks.

Participants will have access to an online platform and the Lund University e-library services throughout the programme.

## TARGET GROUP

- Invited countries: Kenya, Malawi, Rwanda, Tanzania, Uganda, Zambia.
- Mid-level professionals with a good chance of contributing to change based on where they work (ministerial departments with links to land-related SDGs), and a mandate with time allocation toward SDG implementation (persons who would have time to put the knowledge to practice within their institutions).
- Intermediate level civil servants in the early stages of their careers, and working in land-related ministries.

## YOU CAN APPLY IF YOU

- Are a citizen of, and currently working in Kenya, Malawi, Rwanda, Tanzania, Uganda or Zambia.
- Are passionate about land-related issues - evidenced through past/present activities or work.
- Are under 45 years old (born in 1974 or after).
- Have a good command of English.
- Have a relevant higher education (at least three years, equivalent to a Bachelor's Degree).
- Have the time (see the dates above) to dedicate fully to the programme.
- Are employed in one of the following groups: ministerial departments with links to land-related SDGs, NGO with links to land-related SDGs, or similar.

## And it is desirable if you

- Have participated in scientific assessments related to land resources, management, or other.
- Hold a position in your organisation/institution that can influence policy.
- Computer literacy.

## PRACTICAL INFORMATION

**Dates in Kenya:** 6 June- 21 June, 2019

**Dates in Lund, Sweden:** 5 September – 14 September, 2019

**Number of participants:** 15- 20

**Cost:** Participation in this programme is free of charge and includes meals, shared accommodation and trip. The participant's organisation is responsible paying for Swedish visa.

**Accommodation:** Participants will have shared rooms at a Lund University Guest House.

**Language of instruction:** English

**Application period:** 14 February - 24 March 2019

**APPLY [HERE](#)**

**Questions about the application:** Contact the Project team at Lund University, [landislife@education.lu.se](mailto:landislife@education.lu.se)